

A large, light blue arc is positioned on the left side of the slide, partially overlapping the text box.

**I want more control over the  
Universe.**

... and I want it now!

# Presented By:



Jevan M. Choo Quan

I work for

**Xenon Consulting Inc.**



I was born on the Island of Trinidad.

# Today's Topics



- Designer Tricks
  
- One Big or two small?
  - Linking Reports
  
- Customized List of Values (LOV)
  
- Hello My Name is ...
  - Advanced Login Strategy

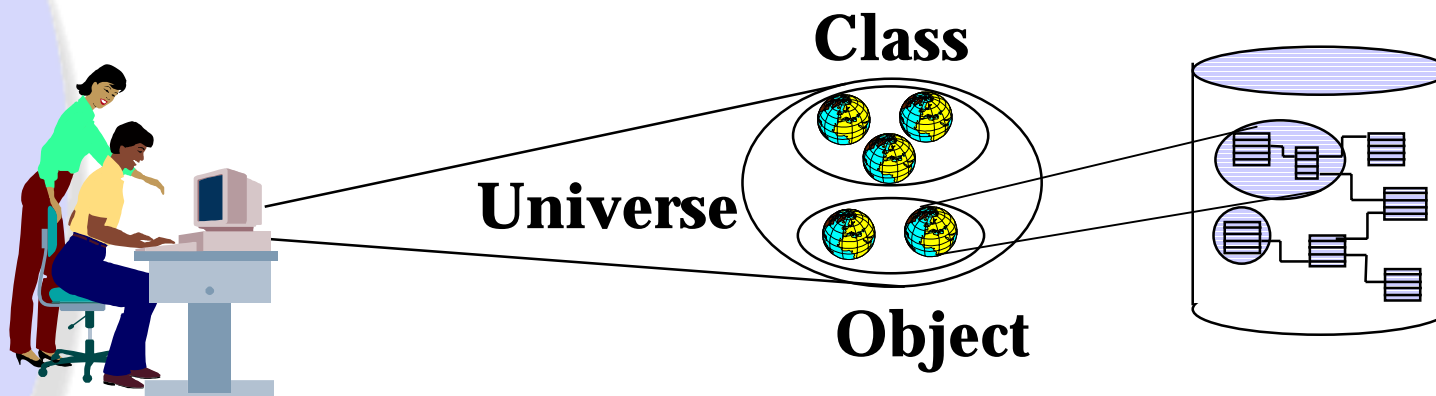
# Evolution of the Universe



- From Version 4x to 5x/2x to 6x the designer technology has not changed.
- Although many enhancements have been added.
- The Semantic Layer still provides a business representation of the underlying database

# Classes, Objects, and Universes

- You **STILL** get information by using everyday business language:



- An Object is **STILL** anything you want to see in a report

# Enterprise 6 Enhancements



- Separate Cardinality check
- Search function
- View tables associated with objects
- Select multiple values in the Edit Where Clause for an object's List of Values
- Detect Keys and Universe pane hide/show button
- Save Universe as PDF file
- New Parameters tab for Universe manipulation

# Coming Attractions



- To Select Products Only
  - Multiple Data Providers
  - Templates?
  - Alerters

# Summary VS Detail



- Option 1
  - One Large Report with all Data
  - Both Summary and Detail
- Option 2
  - Two Smaller Reports
  - One Very Small High Level
  - One focused Detail Report

# Report Linking



1. Prepare the Target Document
2. Modify the Linking Object
3. Test Universe and Target document

# 1. Prepare the Target Doc



- Create a Document that contains Detail information that a user would like to access.
- This report should contain a prompt that will restrict the Detail report to one area.
- Publish this report to the Corporate Documents, set to refresh on Open.

## 2. Modify the Linking Obj



- Open the Designer and Edit the Object to return values as Hyperlinks
- Modify the SQL of the object with the following syntax

```
'<a href="http://<WebI server name>:<server port>/<virtual directory>/  
scripts/openDocument.<web application>?sDocName=<document  
name>&sType=<document type>&iDocID=<document id>&lsS<prompt  
message>='+object SELECT+'>'+object SELECT+'</a>'
```

- Format Object to to “Read as HTML”
- Save and Export the Universe

## 2. The Syntax



<b>Syntax</b>	<b>Definition</b>
<i>&lt;WebI server name&gt;</i>	Name of Web Intelligence Server
<i>&lt;server port&gt;</i>	Port Number of Web Server
<i>&lt;virtual directory&gt;</i>	Virtual Directory (Default: wiasp or wijsp)
<i>&lt;web application&gt;</i>	Web Application Type (ASP or JSP)
<i>&lt;document name&gt;</i>	Name of Target Document
<i>&lt;document type&gt;</i>	Document Type (wid, wqy, bqy, rep or agn)
<i>&lt;document id&gt;</i>	Document Identifier
<i>&lt;prompt message&gt;</i>	The prompt message of the Target Report
<i>object SELECT</i>	The Select statement of the Linked Object

## 2. Optional Syntax



Syntax	Definition
sRepoType	Type of Document (Corporate, Inbox or Personal Document)
IsSPrompt message	Prompt message, if target document has a prompt.
IsMPrompt message	Values if linked to multi Prompt Target Document
sRefresh	To refresh or not refresh Document

# 3. Test Universe and Doc



- Create a Document using the Link Object
- Execute the report
- Test the Hyperlinks to ensure that the target report is opened and refreshed accurately.

# Note



- If using the Java Report Panel, ensure cell properties are set to “Read contents as HTML”.

# Demo 1



## Demo 1

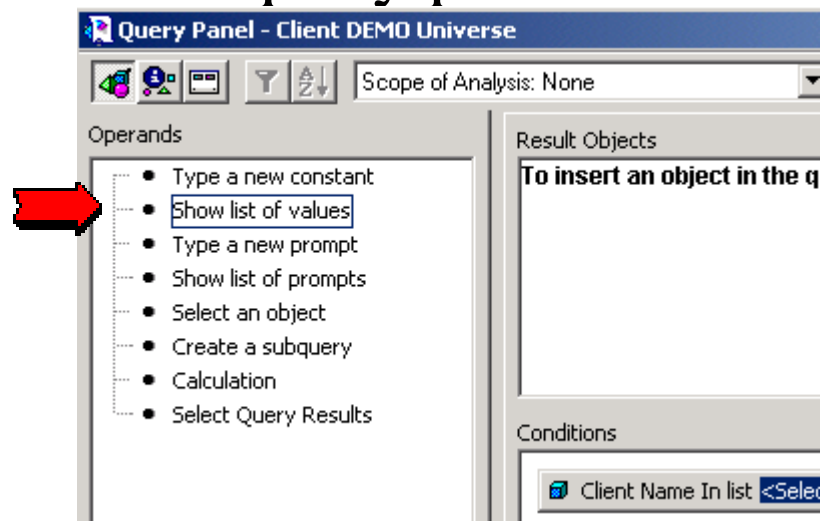
# Customizing a LOV



## Creating a Better Selection Process

# What is a List of Values?

- A list of Distinct values from the column or columns to which the object refers
- A LOV is used on the operand side of a condition in the query panel of the User Module

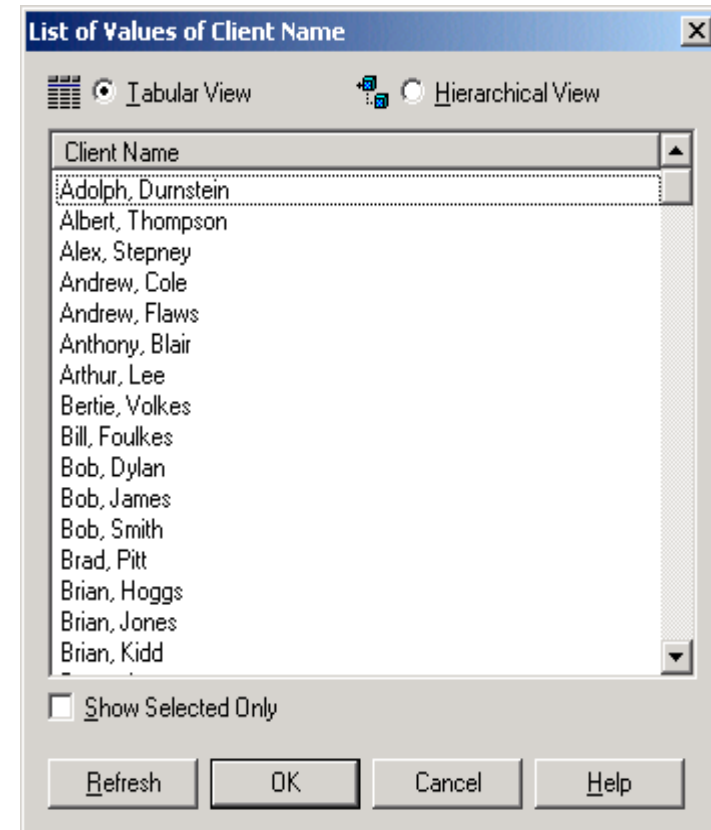


- This is only available of set by the designer

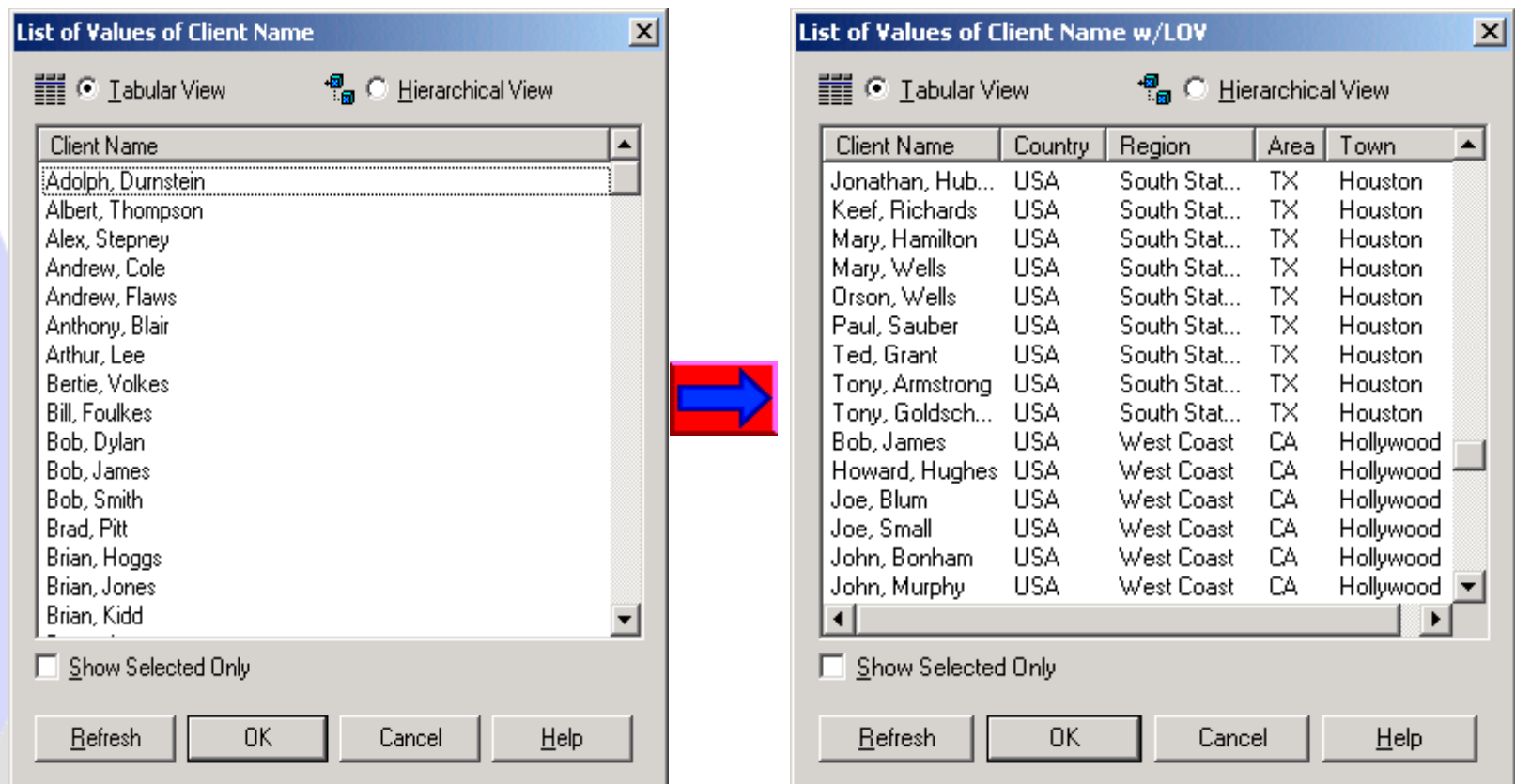
# Customizing a LOV



- When creating a reports to view the Details for some Clients, the Default List of Values makes it difficult (impossible) to determine Additional information without adding more objects to the query



# Customizing a LOV

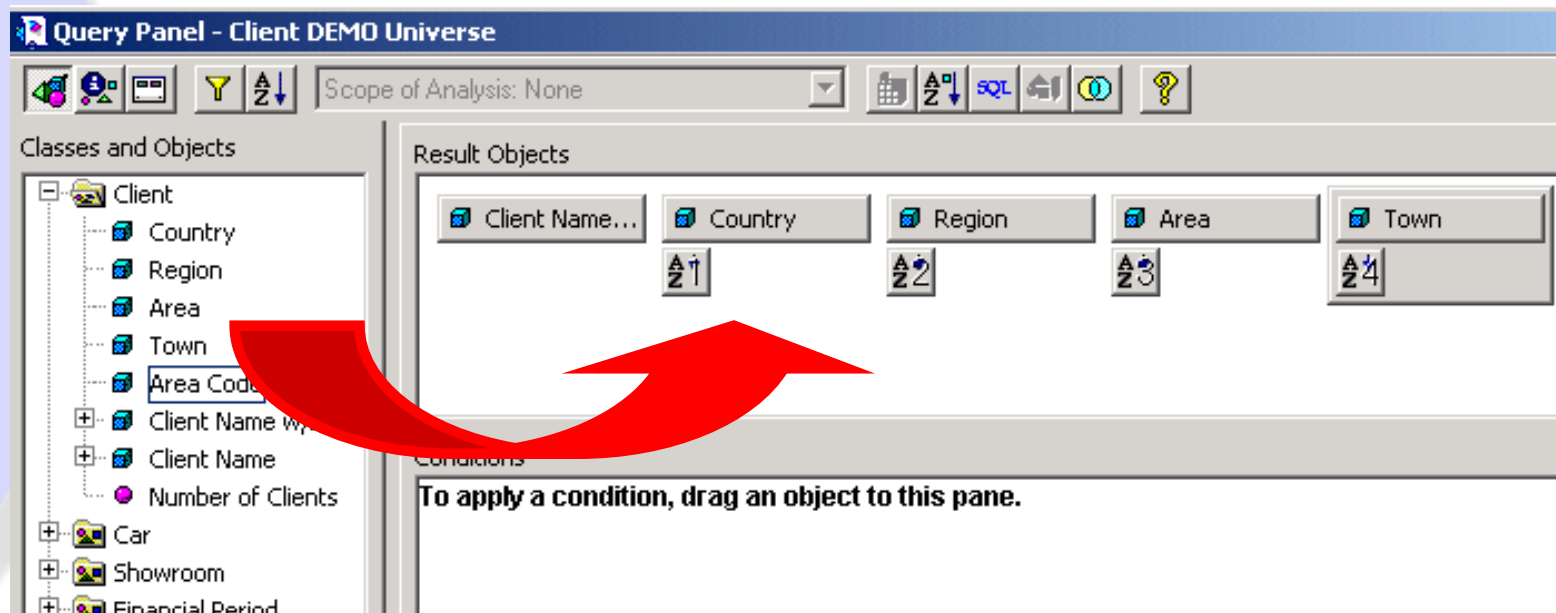
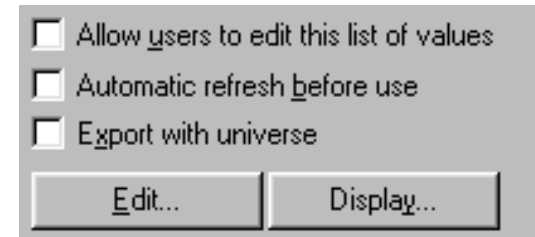


Additional Columns makes it easier to Select a Client from the List of Values

# Creating a Hierarchy for a List of Values



- Click Edit in the Properties box:
- Place the hierarchy objects (which must be sorted) to the right of the LoV object in the Query Panel:

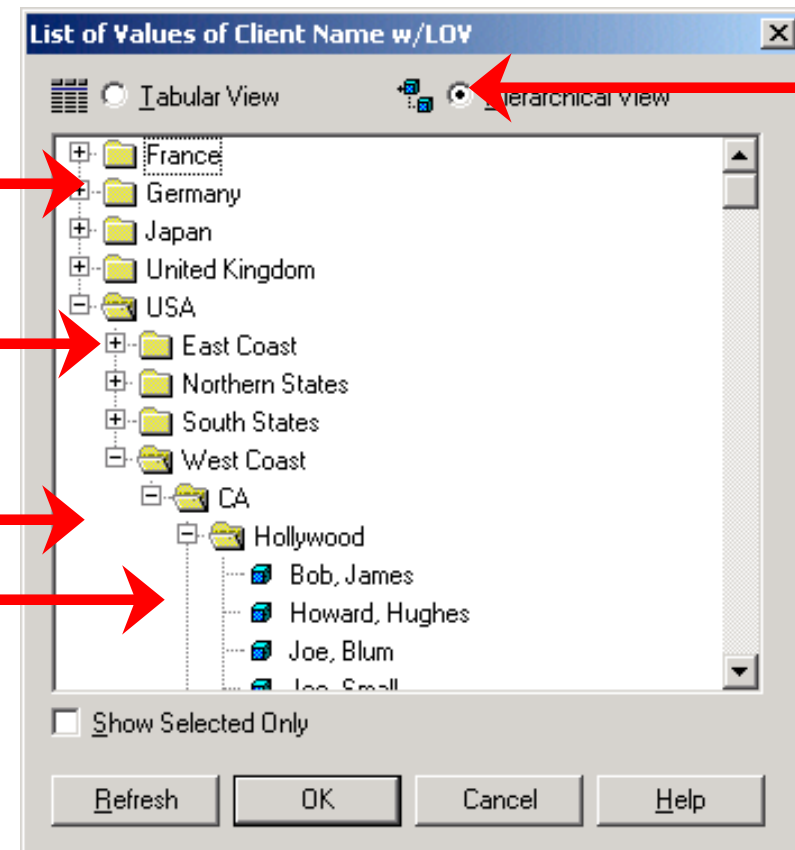


# Creating a Hierarchy for a List of Values



- The resulting Hierarchical View of the LoV makes it easier to select the required value:

- Country:
- Region:
- Area:
- Town:



# Note



- Except for the original object, all Objects must be placed in Hierarchical order from left to Right with Ascending Sorts.

# Demo 2



## Demo 2

# Advanced Login Strategy



- How do users connect?
- Who is logged in?
- Which users are writing queries?
- What tables do they have access to?

# Levels of Security



1. Business Objects Security
2. Windows Security
3. RDBMS Security

# 1. BO Security



- Provided thru the Security Domain
- Business Objects' supervisor creates Usernames and Passwords
- Information is stored in the Repository

## 2. Windows Security



- Windows NT authentication security checks BusinessObjects usernames and passwords against NT usernames.
- If names are the same, once application is launched, users do not have to enter username and password.

# 3. RDBMS Security (ALS)



- Database account restrictions applied to users of BO
- Same username and password for both BO and Database

# Advanced Login Strategy



**All Users connect to the Database using the generic Username and Password**

Oracle Client

Login | Advanced | Custom

Name: @Variable Oracle Connection

Database engine: Oracle 8.1

Use BusinessObjects user name and password:

User name: repo6

Password: \*\*\*\*\*

Database: Delaware

Type: Secured

**All Users connect to the Database using unique Usernames and Passwords**

Oracle Client

Login | Advanced | Custom

Name: @Variable Oracle Connection

Database engine: Oracle 8.1

Use BusinessObjects user name and password:

User name:

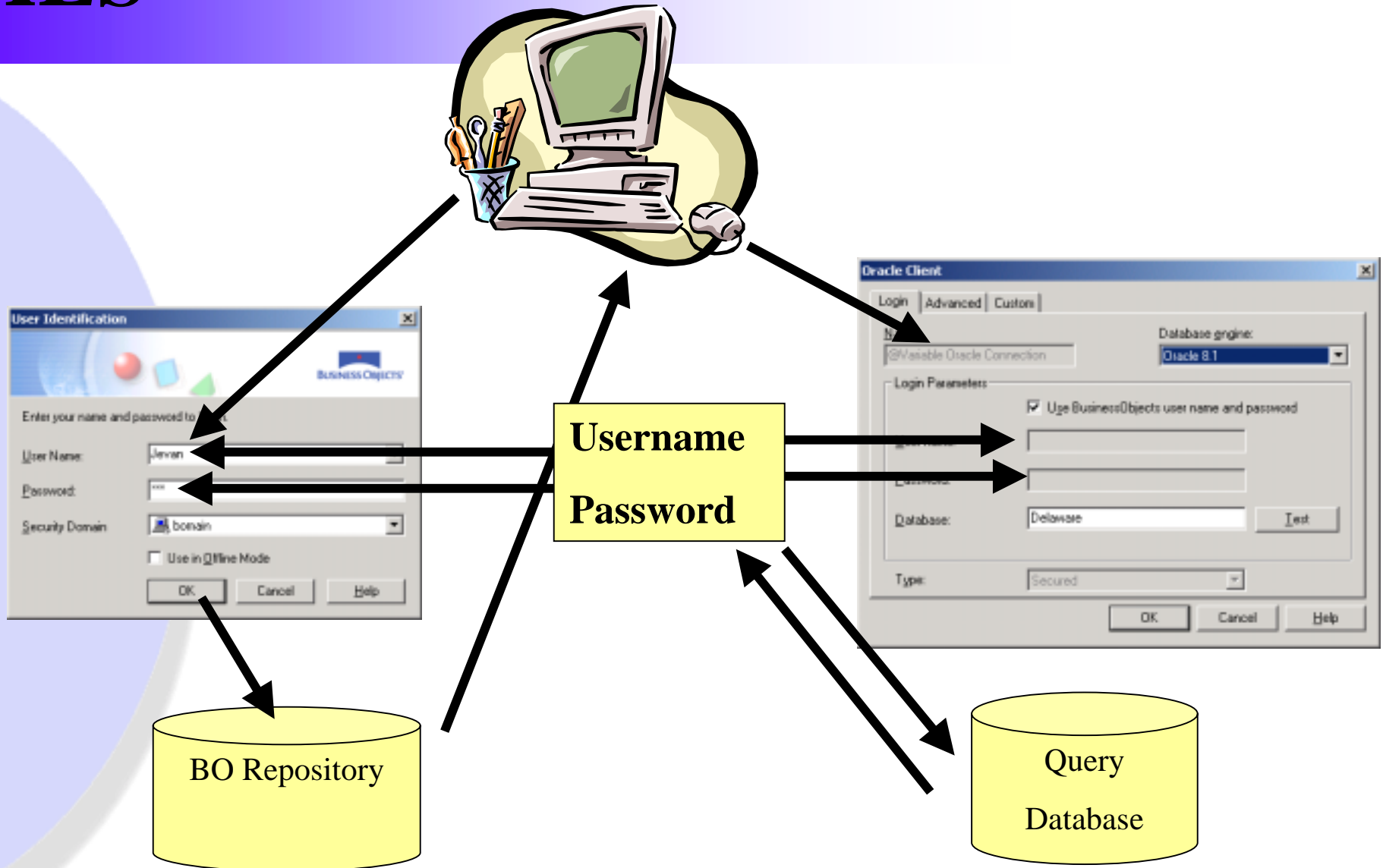
Password:

Database: Delaware

Type: Secured

Test

OK Cancel Help



# Advantages of ALS



- Track users connected to the database
- Only one Username and Password to maintain
- Users only connect to data they are allowed to see
- One universe connection can be used to access multiple databases

# Demo 3



## Demo 3

# Summary



- Linking Reports
- Customized List of Values (LOV)
- Advanced Login Strategy

# References



- BusinessObjects Board (BOB)
  - [www.forumtopics.combusobj/index.php](http://www.forumtopics.combusobj/index.php)
- Knowledge Base (KB)
  - [www.techsupport.businessobjects.com](http://www.techsupport.businessobjects.com)
- BusinessObjects Education
  - Designer 6.x

# Thank you



- Questions???